

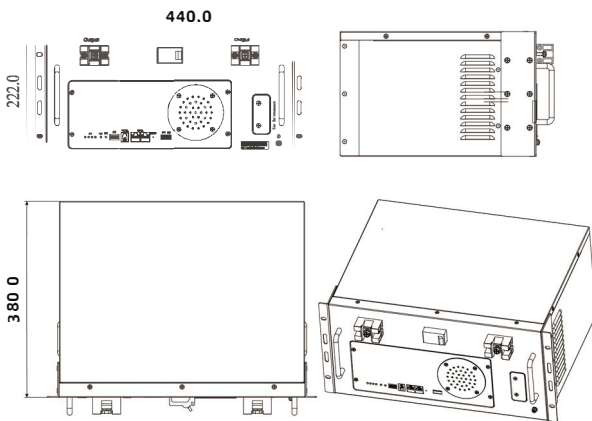
Lithium Battery Pack

▶ VT48100B

Intelligent lithium battery, integrated with self-designed BMS which can be widely used in various telecom and energy storage system such as indoor distribution stations, integrated base stations, edge stations, micro-cell stations, FTTX equipment, distributed power supply, standby.

▶ Key Features

- High quality LFP cells
- High rate charge/discharge current @100A
- Long design life up to 15+ years@ 25°C
- High efficiency between charge and discharge
- Modbus/CAN/SNMP V2/SNMP V3 (optional)
- Multiple protection methods based on patented BMS
- Intelligent anti-theft solution (optional)



Specifications

Item	1P15S
Nominal Capacity	100Ah@0.2C,25°C
Nominal Voltage	48 VDC
Rated Charge Voltage	54.0 V
Max. Continuous Charge Current	100A@25°C
Discharge Cut-off Voltage	40.5 V
Max. Continuous Discharge Current	100A@25°C
Temperature Range of Charge	0°C~60°C
Temperature Range of Discharge	-20°C~60°C
Allowed Humidity Range	≤95% RH
Weight	Approx. 46.5 kg
Dimension(L*H*D)	442*222*380 mm (Exclude mounting ear and hanger)
IP Level	IP 20

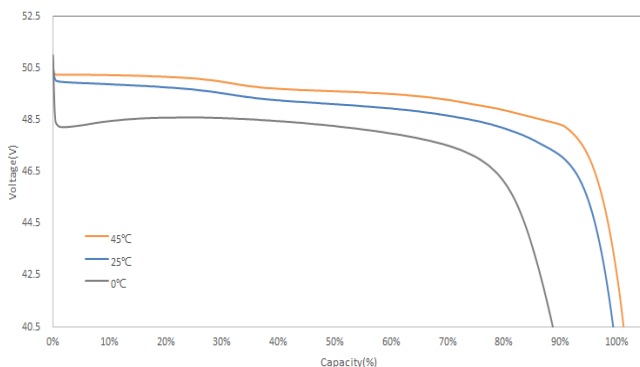
Discharge data with constant current/25°C

Time/h \ Current/A	0.1C	0.2C	0.3C	0.4C	0.5C	0.6C	0.8C	1C
End voltage /V	Hours							
46.5 V	9.43	4.60	3.05	2.30	1.67	1.37	0.88	0.68
45.0 V	9.77	4.78	3.20	2.33	1.82	1.53	1.10	0.87
43.5 V	10.00	4.88	3.28	2.43	1.93	1.57	1.18	0.94
42.0 V	10.18	5.00	3.35	2.46	1.98	1.65	1.22	0.97
40.5 V	10.30	5.15	3.40	2.54	2.00	1.67	1.24	1.00

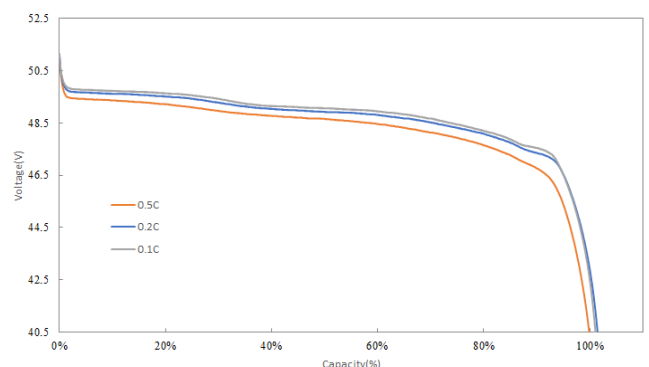
Discharge data with constant power/25°C

Time/h \ Power/W	480	960	1440	1920	2400	2880	3840	4400
End voltage /V	Hours							
46.5 V	9.42	4.59	3.04	2.29	1.66	1.36	0.87	0.79
45.0 V	9.75	4.76	3.18	2.31	1.80	1.51	1.08	0.84
43.5 V	9.97	4.85	3.25	2.40	1.90	1.54	1.15	0.88
42.0 V	10.14	4.96	3.31	2.42	1.94	1.61	1.18	0.92
40.5 V	10.26	5.11	3.36	2.50	1.96	1.63	1.20	0.94

Discharge Curves



Voltage vs. Discharge Capacity Percentage under Different Temperature



Voltage vs. Discharge Capacity Percentage with Different Current Rate